

Lower Thames Crossing

6.2 Environmental Statement Figures

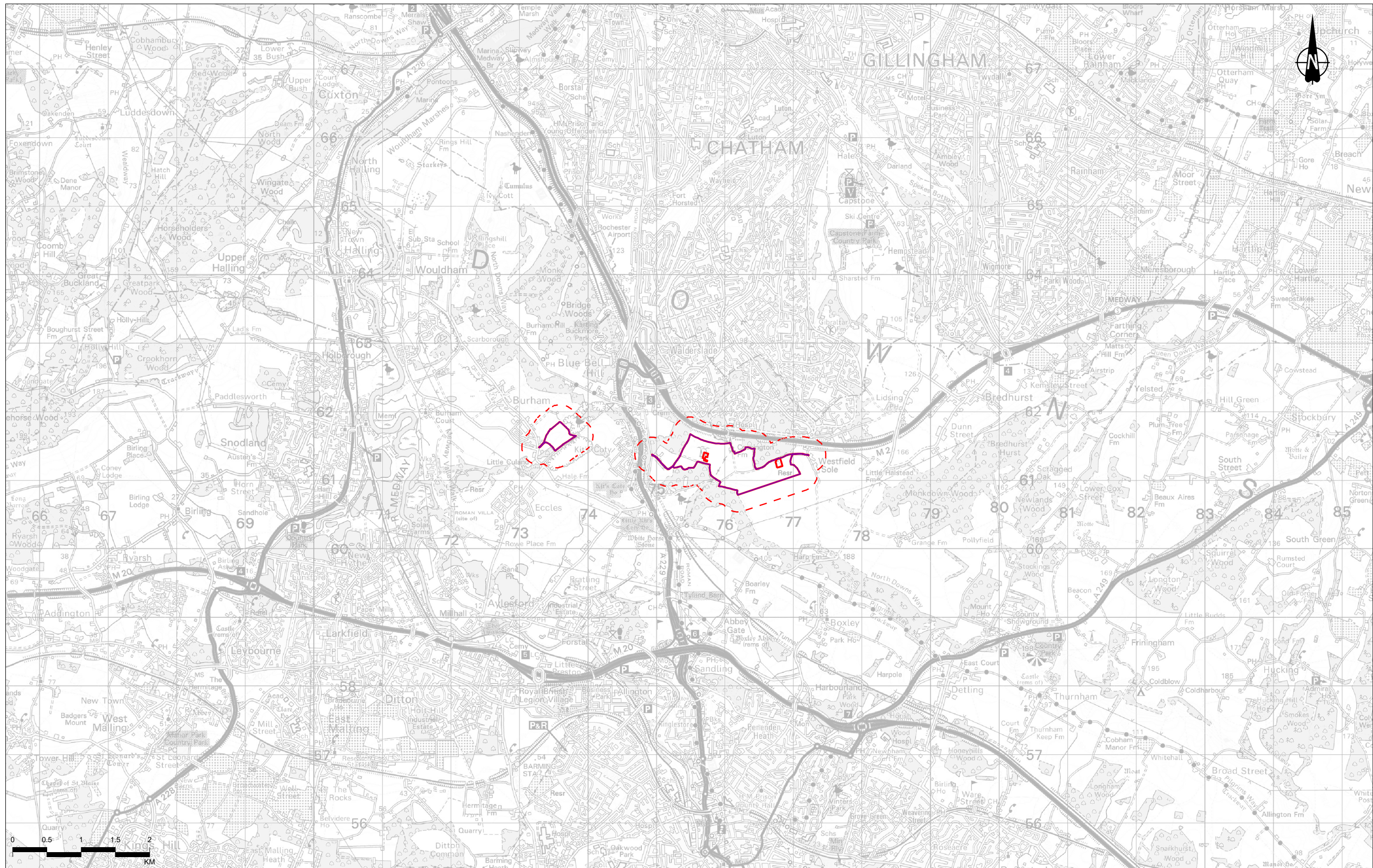
Figure 10.6 - Superficial Deposits

APFP Regulation 5(2)(a)
Infrastructure Planning
(Applications: Prescribed Forms and Procedure)
Regulations 2009
Volume 6

DATE: October 2022

Planning Inspectorate Scheme Ref: TR010032
Application Document Ref: TR010032/APP/6.2

VERSION: 1.0



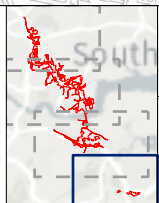
Contains Ordnance Survey data. © Crown copyright and database rights 2022. Ordnance Survey 100030649
Contains public sector information licensed under the Open Government License v3.0.

P02	S8	07/10/2022	DCO Application	SW	JR	TW
Rev	Status	Rev. Date	Purpose of revision	Drawn	Checked	Approved

Note:
Assessment relating to the proposed compensation areas for nitrogen deposition are excluded from this figure. For this assessment please refer to Annex D of Preliminary Risk Assessment Report Appendix 10.6, Application Document 6.3.

Legend

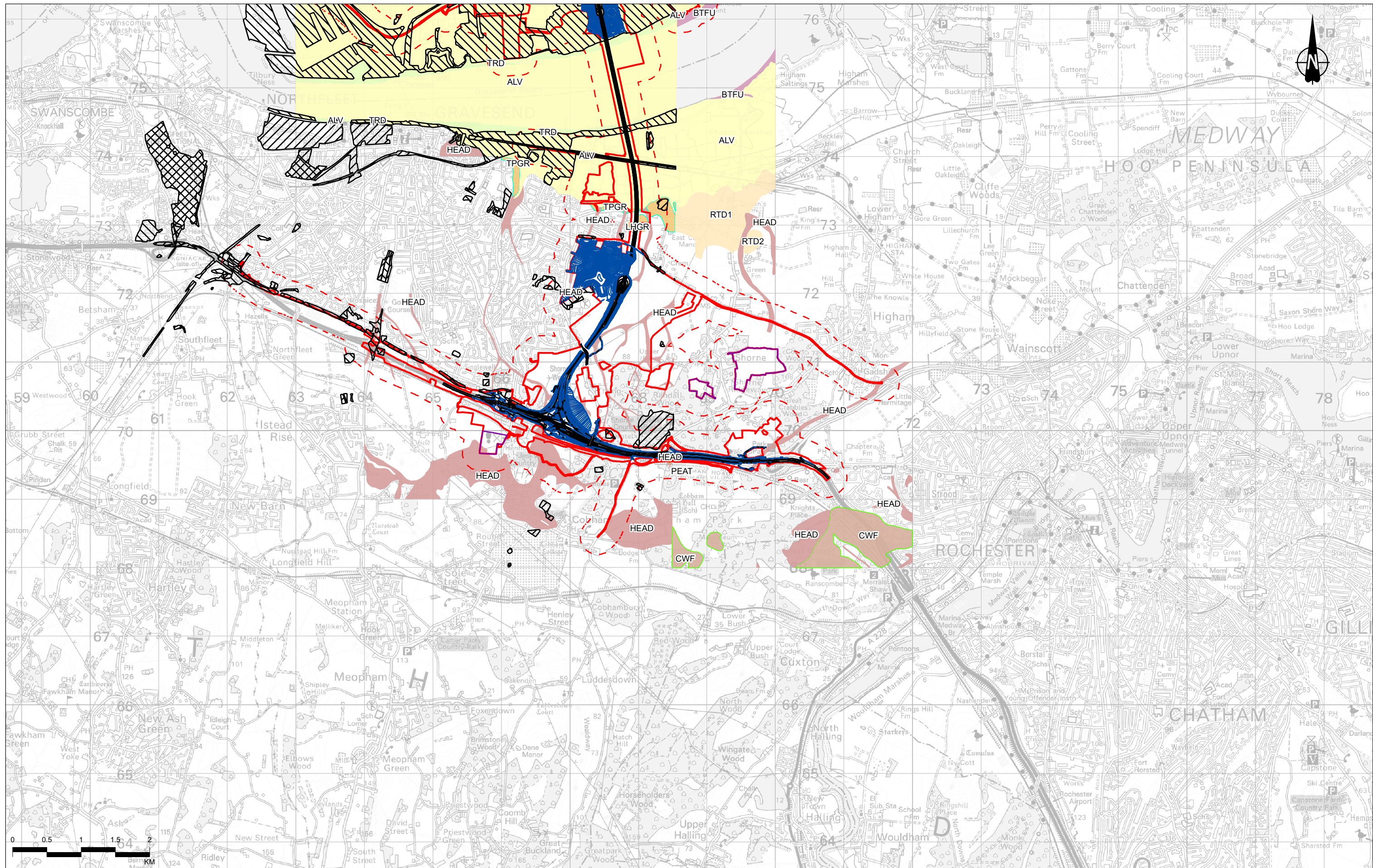
- Order Limits
- Study area (250m buffer to Order Limits)
- Compensation area for nitrogen deposition



Client: **national highways**

Project: **LOWER THAMES CROSSING**

Status	DCO APPLICATION	Original Size	A3	Revision	P02
Application Document Number	TR010032/APP/6.2	Scale	1:50,000		
Drawing Title	Figure 10.6 - Superficial Deposits				
Drawing Number	Page 1 of 4				
HE540039-CJV-EGT-SZP_EGNE0000000-DR-LE-50080					



Contains Ordnance Survey data. © Crown copyright and database rights 2022. Ordnance Survey 100030649
Contains public sector information licensed under the Open Government License v3.0.

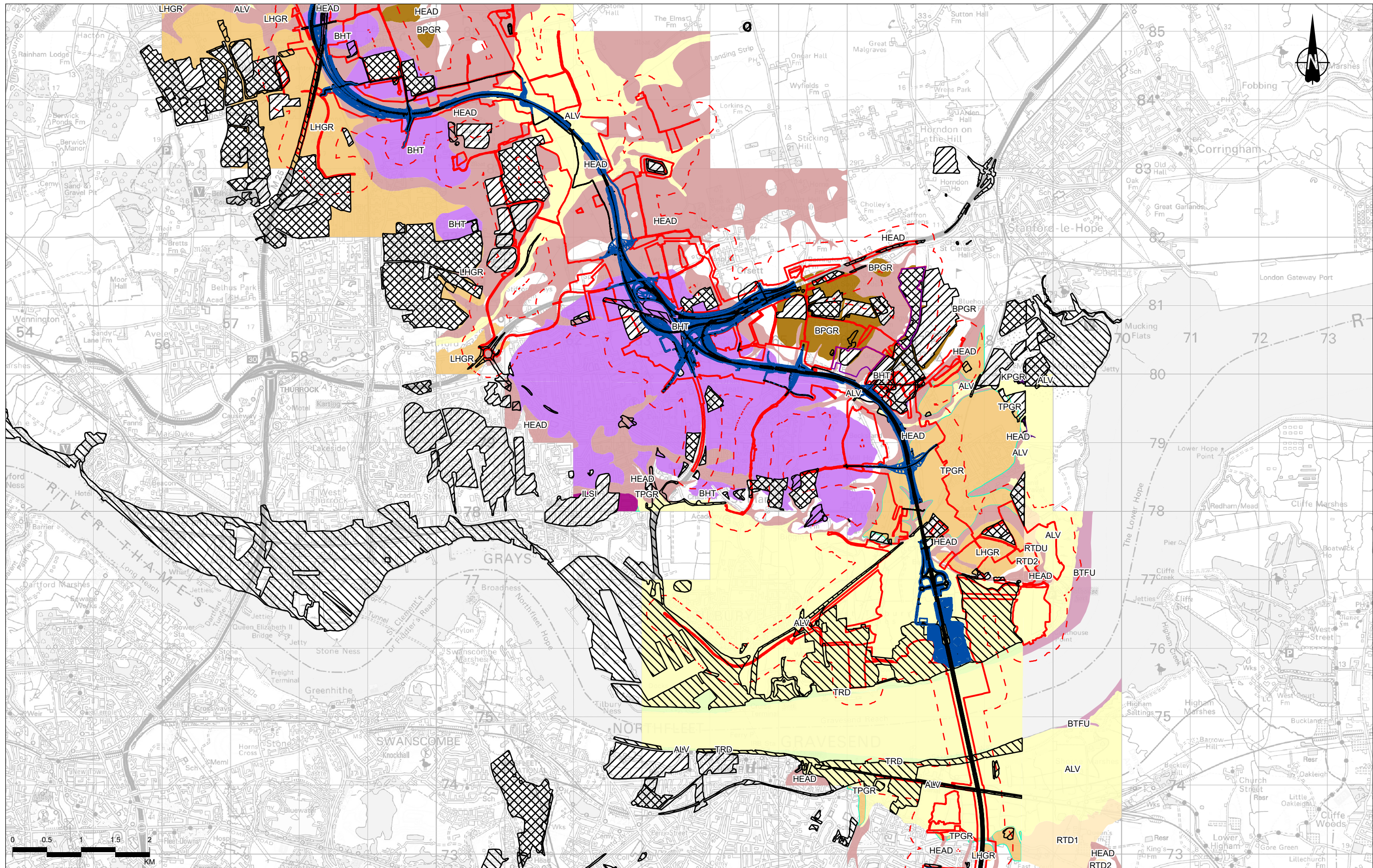
Note:
Assessment relating to the proposed compensation areas for nitrogen deposition are excluded from this figure. For this assessment please refer to Annex D of Preliminary Risk Assessment Report Appendix 10.6, Application Document 6.3.

Rev	Status	Rev. Date	Purpose of revision	Drawn	Chkd	Apprvd
P02	S8	07/10/2022	DCO Application	SW	JR	TW

Legend

- Route alignment
- Earthworks
- Order Limits
- Study area (250m buffer to Order Limits)
- Compensation area for nitrogen deposition
- BGS 50k Superficial Deposits**
 - Alluvium (ALV)
 - Beach and Tidal Flat Deposits (Undifferentiated) (BTFU)
 - Clay-with-flints Formation (CWF)
- Head (HEAD)
- Lynch Hill Gravel Member (LHGR)
- Peat (PEAT)
- River Terrace Deposits (Undifferentiated); River Terrace Deposits, 1; River Terrace Deposits, 2 (RTD)
- Taplow Gravel Formation (TPGR)
- Tidal River Or Creek Deposits (TRD)
- Made Ground
- Infilled Ground
- Worked Ground

Client	
Project	LOWER THAMES CROSSING
Status	DCO APPLICATION
Application Document Number	TR010032/APP/6.2
Drawing Title	Figure 10.6 - Superficial Deposits
Drawing Number	HE540039-CJV-EGT-SZP_EGNE0000000-DR-LE-50080
Original Size	A3
Revision	P02
Scale	1:50,000

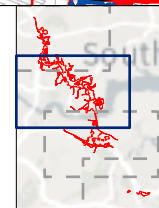


Contains Ordnance Survey data. © Crown copyright and database rights 2022. Ordnance Survey 100030649
Contains public sector information licensed under the Open Government License v3.0.

Note:
Assessment relating to the proposed compensation areas for nitrogen deposition are excluded from this figure. For this assessment please refer to Annex D of Preliminary Risk Assessment Report Appendix 10.6, Application Document 6.3.

P02	S8	07/10/2022	DCO Application	SW	JR	TW
Rev	Status	Rev. Date	Purpose of revision	Drawn	Check'd	Approved

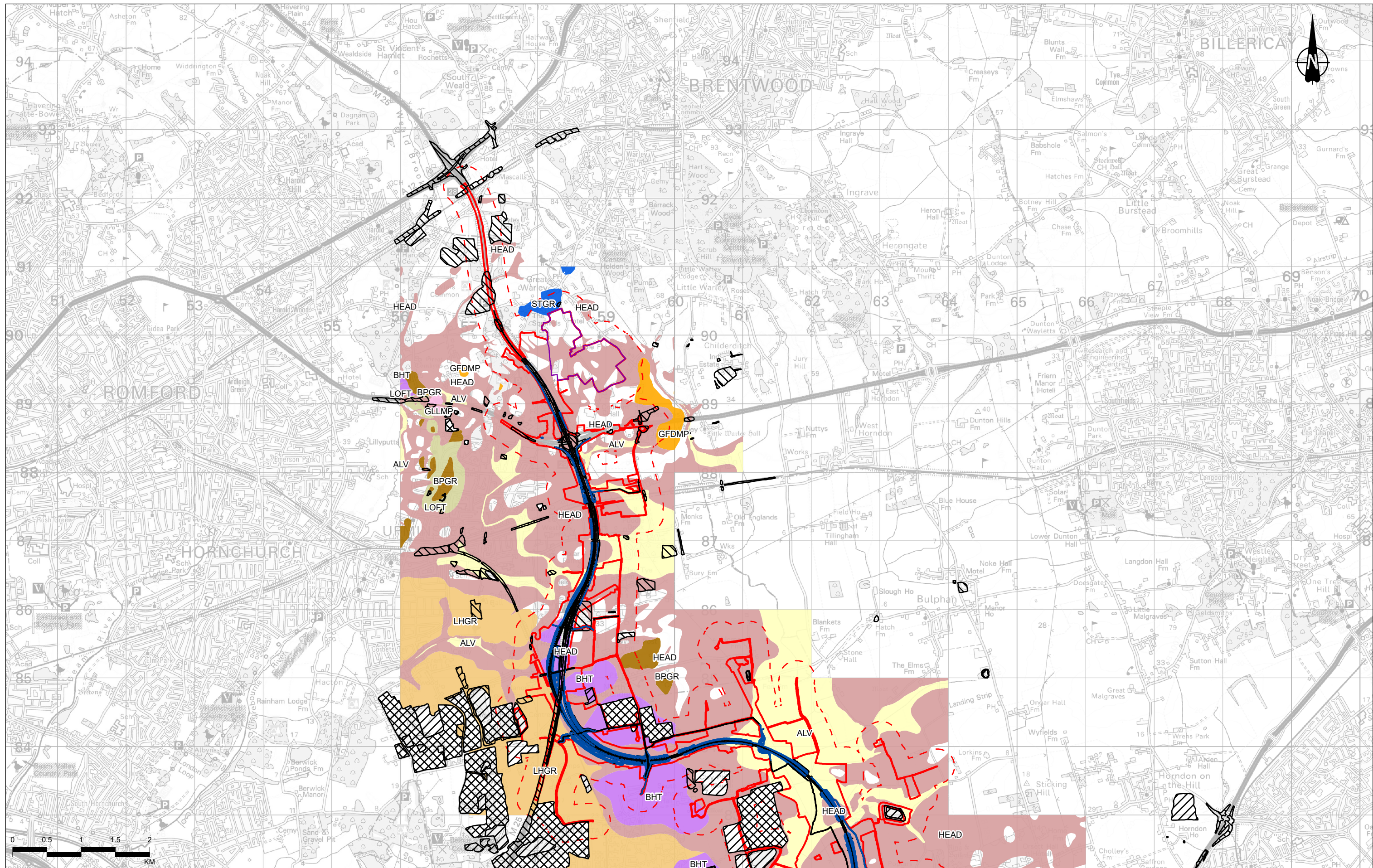
Legend	
	Order Limits
	Study area (250m buffer to Order Limits)
	Compensation area for nitrogen deposition
	BGS 50k Superficial Deposits
	Alluvium (ALV)
	Beach and Tidal Flat Deposits (Undifferentiated) (BTFU)
	Black Park Gravel Member (BPGR)
	Boyn Hill Gravel Member (BHT)
	Head (HEAD)
	Ilford Silt Member (ILSI)
	Kempton Park Gravel Formation (KPGR)
	Lynch Hill Gravel Member (LHGR)
	River Terrace Deposits (Undifferentiated); River Terrace Deposits, 1; River Terrace Deposits, 2 (RTD)
	Taplow Gravel Formation (TPGR)
	Tidal River Or Creek Deposits (TRD)
	Made Ground
	Infilled Ground
	Worked Ground



Client
national highways

Project
LOWER THAMES CROSSING

Status	DCO APPLICATION	Original Size	A3	Revision	P02
Application Document Number	TR010032/APP/6.2	Scale	1:50,000		
Drawing Title	Figure 10.6 - Superficial Deposits				
Drawing Number	HE540039-CJV-EGT-SZP_EGNE00000000-DR-LE-50080				
Page 3 of 4					



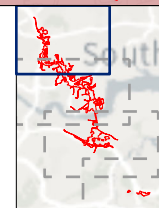
Contains Ordnance Survey data. © Crown copyright and database rights 2022. Ordnance Survey 100030649
Contains public sector information licensed under the Open Government License v3.0.

Note:
Assessment relating to the proposed compensation areas for nitrogen deposition are excluded from this figure. For this assessment please refer to Annex D of Preliminary Risk Assessment Report Appendix 10.6, Application Document 6.3.

P02	S8	07/10/2022	DCO Application	SW	JR	TW
Rev	Status	Rev. Date	Purpose of revision	Drawn	Chkd	Apprvd

Legend

- Order Limits
- Study area (250m buffer to Order Limits)
- Compensation area for nitrogen deposition
- BS5 50k Superficial Deposits**
- Alluvium (ALV)
- Black Park Gravel Member (BPGR)
- Boyn Hill Gravel Member (BHT)
- Glaciofluvial Deposits, Mid Pleistocene (GFDMP)
- Glaciolacustrine Deposits, Mid Pleistocene (GLLMP)
- Head (HEAD)
- Lowestoft Formation (LOFT)
- Lynch Hill Gravel Member (LHGR)
- Stanmore Gravel Formation (STGR)
- Made Ground
- Infilled Ground
- Worked Ground



Client: **national highways**

Project: **LOWER THAMES CROSSING**

Status	DCO APPLICATION	Original Size	A3	Revision	P02
Application Document Number	TR010032/APP/6.2	Scale	1:50,000		
Drawing Title	Figure 10.6 - Superficial Deposits				
Drawing Number	HE540039-CJV-EGT-SZP_EGNE00000000-DR-LE-50080				

Page 4 of 4

If you need help accessing this or any other National Highways information, please call **0300 123 5000** and we will help you.

© Crown copyright 2022.

You may re-use this information (not including logos) free of charge in any format or medium, under the terms of the Open Government Licence. To view this licence:

visit www.nationalarchives.gov.uk/doc/open-government-licence/

write to the **Information Policy Team, The National Archives, Kew, London TW9 4DU**, or email psi@nationalarchives.gsi.gov.uk.

Mapping (where present): © Crown copyright and database rights 2022 OS 100030649. You are permitted to use this data solely to enable you to respond to, or interact with, the organisation that provided you with the data. You are not permitted to copy, sub-license, distribute or sell any of this data to third parties in any form.

If you have any enquiries about this publication email info@nationalhighways.co.uk or call **0300 123 5000***.

*Calls to 03 numbers cost no more than a national rate call to an 01 or 02 number and must count towards any inclusive minutes in the same way as 01 and 02 calls. These rules apply to calls from any type of line including mobile, BT, other fixed line or payphone. Calls may be recorded or monitored.

Printed on paper from well-managed forests and other controlled sources when issued directly by National Highways.

Registered office Bridge House, 1 Walnut Tree Close, Guildford GU1 4LZ

National Highways Company Limited registered in England and Wales number 09346363